

BT7052

50MM ACCESSORY COLLAR

- Accessory collar for use with 50mm (2") poles.
- **Available in Black**



BT7051

50MM COLLAR - HEAVY DUTY

- Heavy duty accessory collar for use with 50mm (2) poles
- **Available in Black**



BT7260

60MM ACCESSORY COLLAR WITH COVERS

- Accessory collar for use with 60mm (2.4") ceiling poles, LCD trolleys and floor stands
- **Available with Silver coverplate**



BT7035

35MM ACCESSORY COLLAR

- Accessory collar for use with inner tubes of BT890, BT882, BT883
- **Available in Silver**



BT7042

42MM ACCESSORY COLLAR

- Accessory collar for use with inner tubes of BT890, BT882, BT883
- **Available in Silver**



BT8435

50MM COLLAR KIT FOR POLE MOUNTING B-TECH HOOK ON MOUNTS

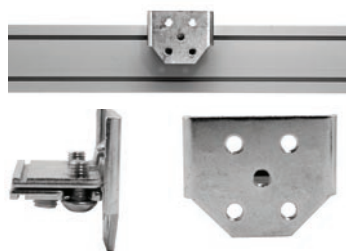
- Collar kit which allows B-Tech hook-on mounts (BT8431 and BT8432) to be attached to single 50mm (2") poles
- Can be used for back-to-back mounting
- Kit comprises 2 x heavy duty collars & mounting spacers
- **Available in Black**



BTX24H

HORIZONTAL EXHIBITION MOUNT

- Designed for mounting on horizontal profile slots
- Holds up to 10kg
- 5 Threaded mounting centres for easy attachment to screen mount
- Adjusts to fit slots from 4.3mm to 8.5mm
- Suitable for all B-Tech accessories displaying the 'Accessory Collar Compatible' symbol



BTX24V

VERTICAL EXHIBITION MOUNT

- Designed for mounting on vertical profile slots
- Holds up to 10kg when used individually, 20kg each when used in pairs
- 5 Threaded mounting holes for easy attachment to screen mount
- Adjusts to fit slots from 4.3mm to 8.5mm
- Suitable for all B-Tech accessories displaying the 'Accessory Collar Compatible' symbol

